

CUSTOM

SHUTTER

COMPANY

HANDCRAFTED &
MAINTENANCE-FREE

**SHUTTERS
& HARDWARE**

Exterior & Interior Styles
Choice of Construction Materials

1-800-470-0685

www.customshuttercompany.com



Nominal Thickness

Louvered Shutters	1 1/4"
Board and Batten Shutters	1 1/2"
Panel Shutters	1"

Standard Widths

All shutter styles 9" - 30"
Custom widths available by special inquiry.

Standard Lengths

All shutter styles 13 1/2" - 120"
Custom lengths available by special inquiry.

Installation

To be installed in either a fixed or operable condition in accordance with manufacturers recommendations, with no nailing or screwing through face of shutter.

See page 15 for functional installation methods.

Material

High quality solid core composite materials.

Finish

High quality two part acrylic urethane finishing process with UV inhibitors offered in 40 standard colors. (See standard color chart on page 5).

Primed ready-to-paint finish available.

Custom colors are available by special inquiry.

Hardware

Complete line of standard and custom functioning shutter hardware available.

See page 12-13 for hardware.

Warranty

10 year warranty against any defects in materials and factory-applied finish.



Board & Batten



Flat Panel



Raised Panel



Closed Louver



V-Groove Panel



True Louver/Raised Panel Combination

Flat Panel

True Louver with Faux Control Rod

True Louver

V-Groove Panel

Raised Panel

Nominal Thickness

- Louvered Shutters 1 1/4"
- Board and Batten Shutters 1 1/4"
- Panel Shutters 1"

Standard Widths

- Louvered Shutters 9" - 30"
- Raised Panel Shutters 12" - 30"
- Bahama Shutters 12" - 119"
- Custom widths available by special inquiry.*

Standard Lengths

- All shutter styles 24" - 120"
- Custom lengths available by special inquiry.*

Installation

To be installed in either a fixed or operable condition in accordance with manufacturers recommendations, with no nailing or screwing through face of shutter.
See page 15 for functional installation methods.

Material

High density structural PVC and/or pultruded fiberglass and/or proprietary composite material. All slats and louvered side rails to be fiberglass.



Finish

Two part acrylic urethane cured by means of microwave thermology and direct infrared heat offered in 40 standard colors. (See standard color chart on page 5). *Custom colors are available by special inquiry.*

Hardware

Complete line of standard and custom functioning shutter hardware available. *See page 12-13 for hardware.*

Warranty

Lifetime warranty on structural components and against manufacturer defect limited to original purchaser when used in residential applications. Twenty year warranty on structural components and against manufacturer defect when installed on commercial structures. Fifteen year warranty on factory applied finish.



Nominal Thickness

- Louvered Shutters 1 1/4" or 1-3/4"
- Raised Panel Shutters 1 1/4"
- Board and Batten Shutters 1 1/4"

Standard Widths

- All shutter styles 9" - 30"
- Custom widths available by special inquiry.*

Standard Lengths

- All shutter styles 13 1/2" - 120"
- Custom lengths available by special inquiry.*

Installation

To be installed in either a fixed or operable condition in accordance with manufacturers recommendations, with no nailing or screwing through face of shutter.

See page 15 for functional installation methods.

Material

High quality solid core PVC composite with marine grade aluminum side support.

Finish

Industrial strength high quality factory finish offered in 40 standard colors. (See standard color chart on page 5). *Custom colors are available by special inquiry.*

Hardware

Complete line of standard and custom functioning shutter hardware available. *See page 12-13 for hardware.*

Warranty

Lifetime warranty against manufacturer defects.



Board & Batten

V-Groove Panel

True Louver/Raised Panel Combination

True Louver

Raised Panel

*The Bimini Collection*TM
High Grade Aluminum Bahama Shutters

Nominal Thickness

All shutter styles 1 1/4"

Standard Widths

All shutter styles12" - 120", in 1/8" increments
Custom widths available by special inquiry.

Standard Lengths

All shutter styles 18 1/2" - 72", in 1/8" increments
Custom widths available by special inquiry.

Installation

To be installed in either a fixed or operable condition in accordance with manufacturers recommendations, with no nailing or screwing through face of shutter.

Material High quality aluminum materials

Finish See standard color chart below.

Custom colors are available by special inquiry.

Hardware

Complete line of standard and custom functioning shutter hardware available.
(See page 12-13 for hardware.)

Warranty: 5 year warranty.



Standard **COLOR** Chart - Composite & Aluminum Shutters

Standard colors available for Wood Composite, Fiberglass Composite, PVC Composite and Aluminum shutters.
Custom colors are available by special inquiry.

032 Black	033 Forest Green	039 Midnight Sky	048 Canyon	035 Federal Brown	042 Sand
070 Tricone Black	044 Pine	037 Deep Sea Blue	036 Redwood	057 Polished Mahogany	049 Driftwood
053 Charleston Green	063 Roycraft Pewter	066 Tempest Blue	068 Roycraft Copper Red	058 Rookwood Med. Brown	060 Weathered Shingle
054 Rookwood Shutter Green	046 Pewter	065 Stratford Blue	050 Board & Batten Red	041 Walnut	072 Wicker
055 Roycraft Bottle Green	064 Roycraft Mist Gray	067 Hamilton Blue	034 Wineberry	059 Craftsman Brown	071 Classical White
038 Evergreen	062 Chelsea Gray	045 Harbor	069 Garnet	061 Hammered Silver	031 White
056 Rookwood Dark Green	043 Plum Creek	047 Cascade	040 Bordeaux		



Nominal Thickness

- Louvered Shutters 1 1/2"
- Raised Panel Shutters 1 1/2"
- Board and Batten Shutters 1 1/2" Board; 1 1/2" Batten

Standard Widths

- All shutter styles 9" - 30"
- Custom widths available by special inquiry.*

Standard Lengths

- All shutter styles 13 1/2" - 120"
- Custom lengths available by special inquiry.*

Installation

To be installed in either a fixed or operable condition in accordance with manufacturers recommendations, with no nailing or screwing through face of shutter.
See page 15 for functional installation methods.

Material

High quality hand-selected Western Red Cedar.

Finish

Shutters are offered in raw paint grade or stain grade material.
 Primed ready-to- paint finish available.
Custom colors are available by special inquiry.

Hardware

Complete line of standard and custom functioning shutter hardware available.
See page 12-13 for hardware.

Warranty

Lifetime warranty against manufacturer defects.



Board & Batten

Raised Panel

True Louver/Raised Panel Combination

True Louver

V-Groove Panel



Board & Batten

Raised Panel

True Louver

True Louver/Raised Panel
Combination

V-Groove Panel

Nominal Thickness

- Louvered Shutters 1 1/2"
- Raised Panel Shutters 1 1/2"
- Board and Batten Shutters 1 1/2" Board;
1 1/2" Batten

Standard Widths

- All shutter styles 9" - 30"
- Custom widths available by special inquiry.*

Standard Lengths

- All shutter styles 13 1/2" - 120"
- Custom lengths available by special inquiry.*

Installation

To be installed in either a fixed or operable condition in accordance with manufacturers recommendations, with no nailing or screwing through face of shutter. See page 15 for functional installation methods.

Material

High quality hand-selected Sapele Mahogany.

Finish

Shutters are offered in raw paint grade or stain grade material. Primed ready-to- paint finish available. *Custom colors are available by special inquiry.*



Hardware

Complete line of standard and custom functioning shutter hardware available. See page 12-13 for hardware.

Warranty

Lifetime warranty against manufacturer defects.



Nominal Thickness

- Louvered Shutters 1 1/2"
- Raised Panel Shutters 1 1/2"
- Board and Batten Shutters 1 1/2" Board; 1 1/2" Batten

Standard Widths

- All shutter styles 9" - 30"
- Custom widths available by special inquiry.*

Standard Lengths

- All shutter styles 13 1/2" - 120"
- Custom lengths available by special inquiry.*

Installation

To be installed in either a fixed or operable condition in accordance with manufacturers recommendations, with no nailing or screwing through face of shutter.
See page 15 for functional installation methods.

Material

High quality hand-selected California Redwood.

Finish

Shutters are offered in raw paint grade or stain grade material.
 Primed ready-to- paint finish available.
Custom colors are available by special inquiry.

Hardware

Complete line of standard and custom functioning shutter hardware available.
See page 12-13 for hardware.

Warranty

Lifetime warranty against manufacturer defects.



Board & Batten



Raised Panel



True Louver



True Louver/Raised Panel Combination



V-Groove Panel



Board & Batten



Raised Panel



True Louver



True Louver/Raised Panel
Combination



V-Groove Panel



Nominal Thickness

- Louvered Shutters 1 1/2"
- Raised Panel Shutters 1 1/2"
- Board and Batten Shutters 1 1/2" Board; 1 1/2" Batten

Standard Widths

- All shutter styles 9" - 30"
- Custom widths available by special inquiry.*

Standard Lengths

- All shutter styles 13 1/2" - 120"
- Custom lengths available by special inquiry.*

Installation

To be installed in either a fixed or operable condition in accordance with manufacturers recommendations, with no nailing or screwing through face of shutter.
See page 15 for functional installation methods.

Material

High quality hand-selected Bald Cypress.

Finish

Shutters are offered in raw paint grade or stain grade material.
Primed ready-to- paint finish available.
Custom colors are available by special inquiry.

Hardware

Complete line of standard and custom functioning shutter hardware available.
See page 12-13 for hardware.

Warranty

Lifetime warranty against manufacturer defects.



Nominal Thickness

- Louvered Shutters 1"
- Raised Panel Shutters 1"
- Board and Batten Shutters 1" Board; 1" Batten

Standard Widths

- All shutter styles 9" - 30"
- Custom widths available by special inquiry.*

Standard Lengths

- All shutter styles 13 1/2" - 120"
- Custom lengths available by special inquiry.*

Installation

To be installed in either a fixed or operable condition in accordance with manufacturers recommendations, with no nailing or screwing through face of shutter.

See page 15 for functional installation methods.

Material

High quality hand-selected Southern Yellow Pine.

Finish

Shutters are offered in raw paint grade or stain grade material. Primed ready-to- paint finish available.

Custom colors are available by special inquiry.

Hardware

Complete line of standard and custom functioning shutter hardware available.

See page 12-13 for hardware.

Warranty

Lifetime warranty against manufacturer defects.



Board & Batten

Raised Panel

True Louver

True Louver/Raised Panel Combination

V-Groove Panel



Board & Batten

Raised Panel
2 Equal Sections

Raised Panel
3 Equal Sections

True Louver

True Louver/Raised Panel
Combination



Nominal Thickness

All Shutters 1" thick on all sides

Standard Widths

Louver Styles 5 3/4", 8 1/2", 9 1/4",
11", 12", 13" 14 1/2",
16 1/2", 18"

Raised Panel Styles 12", 14 1/2", 16 1/2", 18"

Board & Batten (Joined) 7 3/4", 10 1/2", 14", 17
1/2"

Standard Lengths

Louver Styles 18" - 144"

Raised Panel Style (Single) 18" - 55"

Raised Panel Style (Double) 22" - 110"

Raised Panel Style (Triple) 33" - 144"

Board & Batten Style 18" - 144"

Installation

To be installed in a fixed condition in accordance with manufacturers recommendations.

Material

Maintenance-free UV-Stabilized polypropylene copolymer.

Finish Molded through color.

Colors 20 colors available.

Hardware

Tapcon screws. Decorative hardware optional. See page 12-13 for hardware selection.

Warranty

40 year warranty against cracking, splitting or fading.



CAST ALUMINUM

8" Decorative Scroll Shutter Bolt



Floral Ring Pull



Flat Rat Tail Stay



Protruding Rat Tail Stay



Classic "S" Stay

FORGED STEEL

Adjustable Lag Pintel



Rounded Plate Pintel



Leaf Pintel



Bahama Stays



Bahama Shutter Hook



New York Strap Shutter Hinge



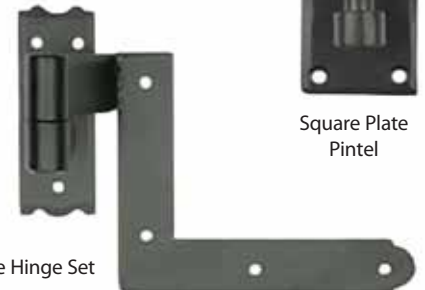
Suffolk Style "L" Hinge



Square Plate Pintel

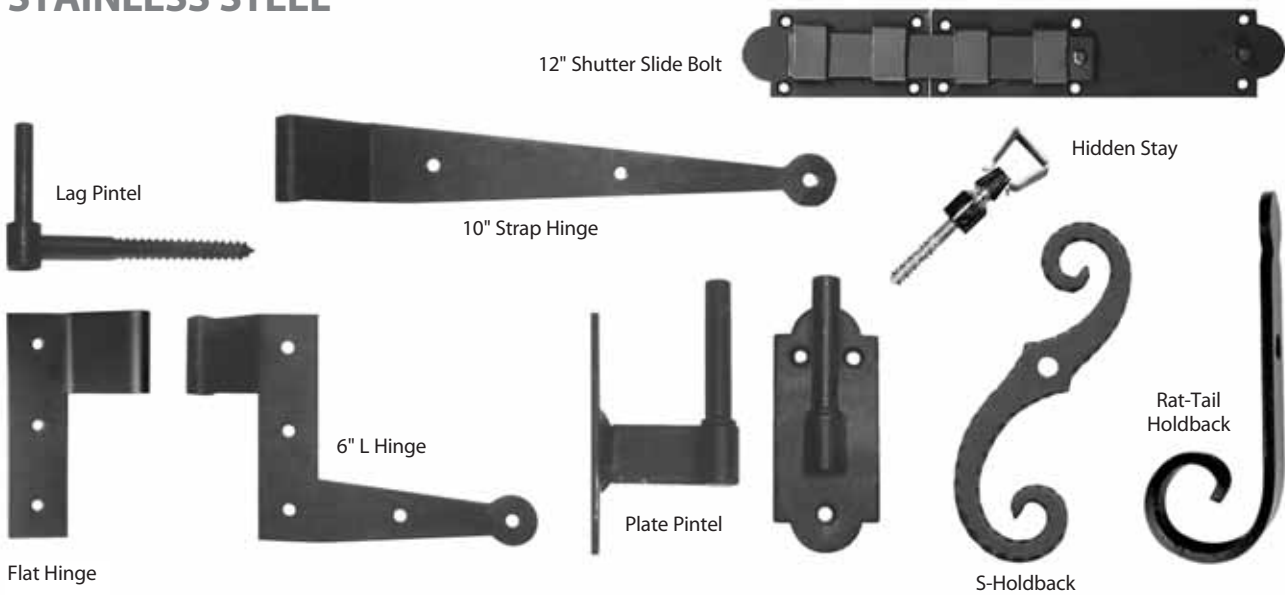


NY Style Hinge Set

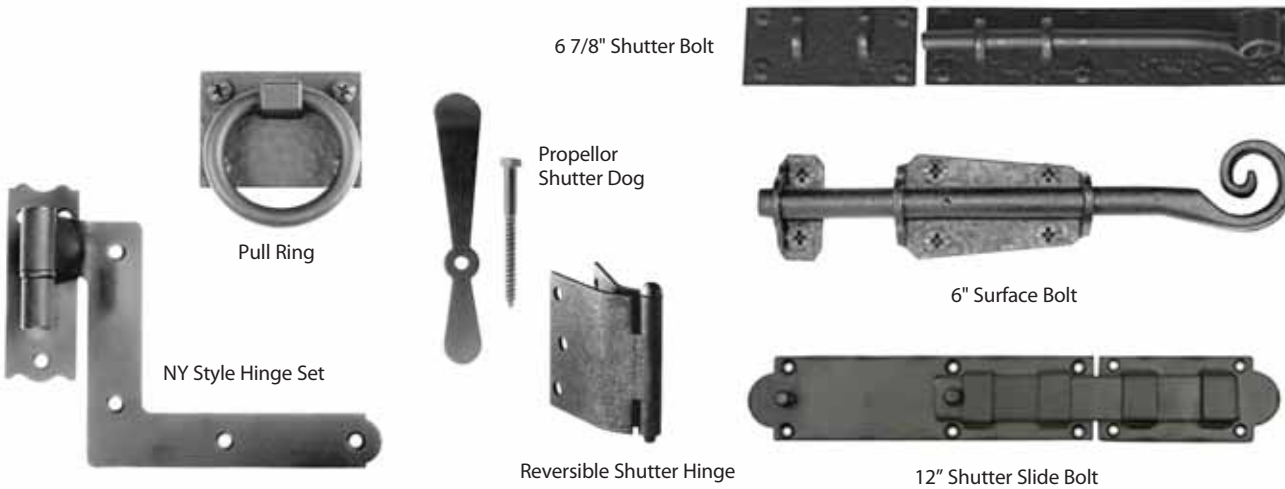


Proper hardware selection is important to ensure proper installation and functionality of your shutter. Plus, the wide variety of styles and materials offered by Custom Shutter Company allows you to individualize your shutter presentation to meet your personal satisfaction.

STAINLESS STEEL



STANDARD STEEL



DECORATIVE HARDWARE

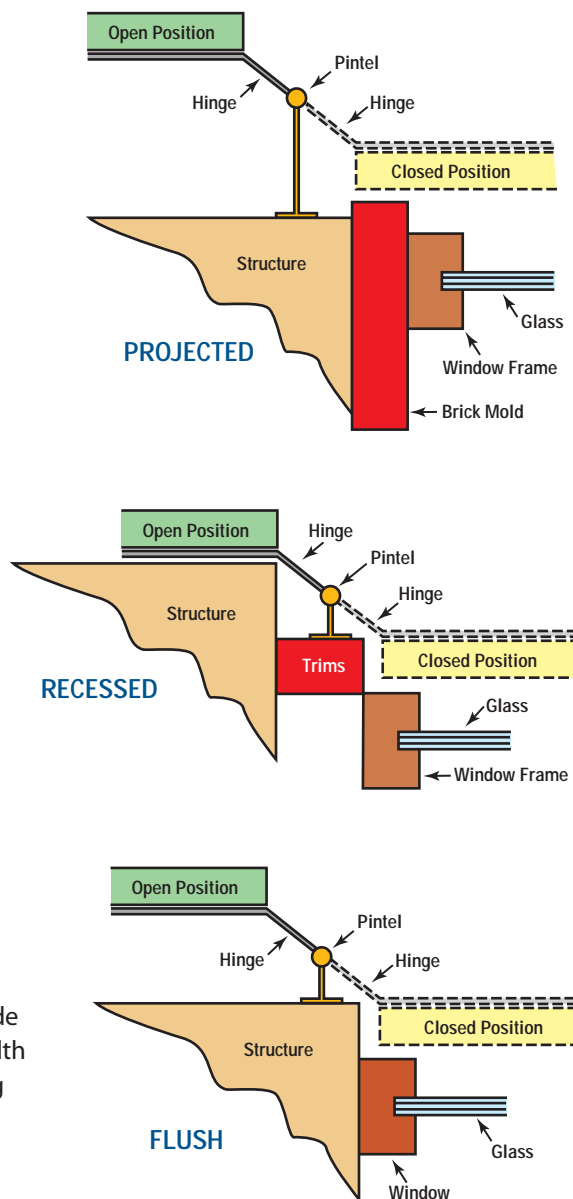


It is important to determine what hardware will be used before measuring for the exterior shutter installation if the shutters will be functioning. Understanding the shutter hardware mounting location is essential to getting accurate measurements.

The diagrams at the right and instructions below show the most common exterior shutter installations.

Examples of Common Installation Options

- Projected** - The exterior shutters are going to function so that in the closed position they will cover the opening. Notice that the pintel offset is greater than the other examples. This creates depth and allows the shutter to close without binding with the edge of the structure. The projected installation example is the easiest for measuring because there is no trim or structure to dictate the measurements.
- Recessed** - The exterior shutters are going to function so that in the closed position the shutters are going to be between the trim around the windows. Thus the measurements must be made from inside trim to inside trim for width and height. It is important to recognize the depth created by the trim as the depth of the shutter might be greater than that of the trim. If this problem exists, then combining pintel and hinge offsets can create more depth as in the projected example.
- Flush** - The exterior shutters are going to function so that in the closed position the outside edge of the shutters is flush with the surface of the structure. Thus the measurement must be made between the inside edges of the opening of the structure for width and height. It is important to recognize the depth of the opening as the depth of the shutter might be greater than that of the opening. If this problem exists, then combining pintel and hinge offsets can create more depth as in the projected example.



Once the installation method has been determined, the width and height of the installation area is known. Traditionally, the method for determining shutter width is as follows:

$$\text{Exterior Shutter Width} = \text{Opening Width} - \text{clearances (if any)} / (\# \text{ of windows} * 2)$$

If the shutters are going to function, it is important to allow for hinges and spacing between shutters by subtracting clearances from opening width before calculating for exterior shutter width. Also, the exterior shutter must be the exact width or must be trimmed at the time of installation in order to function properly. For installations involving more than one window where the shutters must function, bi-folding hinges will be needed and in the open position the shutters will fold back behind each other so that only one shutter is visible.

Please Note:

This is just a guide intended to explain the principles involved in measuring for exterior shutter installations. Accuracy depends on the accuracy of measuring and properly choosing your installation method. Installations options are available that may not be listed in this guideline but if the principles of this guide are understood clearly, then creativity will allow installers to expand on these principles to deliver a wide range of opportunities. Just remember, take several measurements of each opening since they are not always square and be safe.

General Guidelines for Installing Traditional Shutters



1. Pick shutters to fit window and put next to each window on top of saw horses to make sure shutters are paired properly. Lay two shutters face down next to each and prepare to install hinges.



2. Install hinges after determining offset. Hinges are to be set at top and bottom even with outside. Drill holes with 1/8th pilot bit. Be careful not to drill all the way through shutter.



3. Position and install upper holdback clips 1" from top and center edge of stile. Shutters over 58" require 2 sets of acorns; install similarly at top.

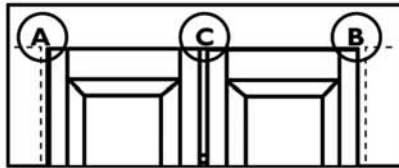


4. Install slide bolt. Turn shutters over and line-up slide bolt edge with shutter edge (see diagram above). Pre-drill 1/8 slot hole (careful not to drill all the way through). Install slide bolt with

screws. Shutters are now ready for installation.



5. Position shutter in opening allowing equal amounts of space between shutter and wall (A & B), and between shutters (C) to allow for smooth operation (see diagram below).



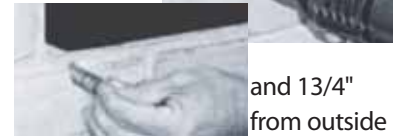
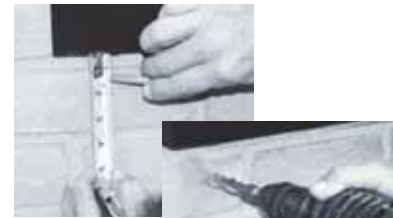
When attaching the pintel to the structure you may have to drill into mortar and brick—use appropriate mollies in mortar and brick.



6. Install acorn clip. Swing shutter open and mark center of holdback clip and install acorn clip into brick.



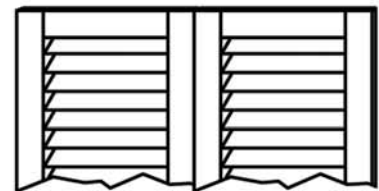
7. Install "S" Holdback*. Shutter is now held open by acorn anchor. Position shutter dog in correct location and mark for screws and fasten to wall—1 1/2" down from shutter



and 13/4" from outside



edge.



Shutters in closed position



HANDCRAFTED & MAINTENANCE-FREE EXTERIOR SHUTTERS

Wood Composite • Fiberglass Composite • PVC Composite • Aluminum
Western Red Cedar • Sapele Mahogany • California Redwood
Bald Cypress • Southern Yellow Pine • Vinyl

Select from True Louver, Raised Panel, V-Groove Panel, Flat Panel
Board & Batten and Other Shutter Styles

Interior Shutters Also Available.

EXTERIOR SHUTTER HARDWARE

Cast Aluminum • Forged Steel • Cast Iron • Stainless Steel

1-800-470-0685

www.customshuttercompany.com

82 Plantation Pointe #301 • Fairhope, Alabama 36532

Tel: 251.990.4955 • Fax: 251.545.4120 • Email: sales@customshuttercompany.com